

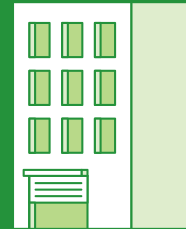
A new SUEZ-Alma PET recycling plant in Belgium

📍 rue du Déversoir, 6010 Couillet



PET bottles

Food grade r-PET for bottle-to-bottle applications, from the Belgian customers to the Belgian retail market, with 51 to 100 % recycled content.



Capacity

40kt/Year

approx.

40

new hires
for the site in
Couillet



investment

about

**€40
million**



Partners



SUEZ Group offers innovative and resilient solutions for water management, waste recovery, soil decontamination and air treatment. SUEZ Recycling and Recovery Belgium serves both businesses and citizens. In addition, the Group operates 34 sorting plants around the world, and operates different plastics recycling plants in order to help its industrial customers produce circular packaging. On the horizon of its strategic plan, SUEZ Group aims for 100 % sustainable solutions with a positive impact on the environment, health and climate. In 2019, the Group achieved sales of 18.0 billion euros. <https://www.suez.com/en>

Sources ALMA is a European family company. It offers healthy and safe hydration thanks to its high quality spring and mineral waters. Active in the bottling of water and non-alcoholic drinks at 45 production sites in Europe, Sources ALMA is the leading player in volume on the French and Belgian bottled water market, with a diversified brand portfolio. Since the beginning of its history, Sources ALMA has reduced its environmental footprint in particular by decreasing the weight of its bottles, and by effectively networking its production sites and optimizing its transport. Since 2009, Sources ALMA integrates its own r-PET in its PET bottles. <https://www.sources-alma.com/en/>

This first Belgian PET recycling plant allows SUEZ to strengthen its position in Belgium: SUEZ participates in the whole value chain, from eco-design, collection and sorting to recycling. Sources ALMA will reintroduce the produced r-PET into the Belgian market through its own brands, with newly recycled water bottles. It is a real Belgian circular story.

Start of
construction

**OCTOBER
2021**

End of
construction

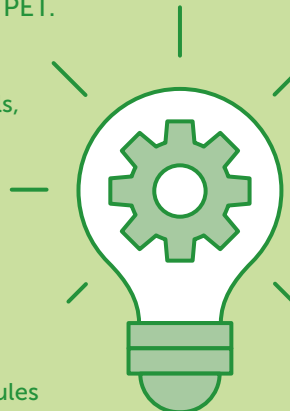
**DECEMBER
2022**

Process and innovation

100 % circularity in the production of food grade r-PET with a similar quality as virgin PET.

Recycling process :

1. Mechanical sorting to clear out labels, caps and other impurities
2. Washing to clean out any food residue or other
3. Different grinding steps
4. Thermal and mechanical drying
5. Screening
6. Granulation into flakes or spangles
7. Extrusion into pellets
8. Polycondensation of the PET molecules to ensure food grade quality



The Couillet site is made available to the project by the inter-municipality TIBI in the form of a long-term lease.

Together good sorting, better recycling

Fostplus